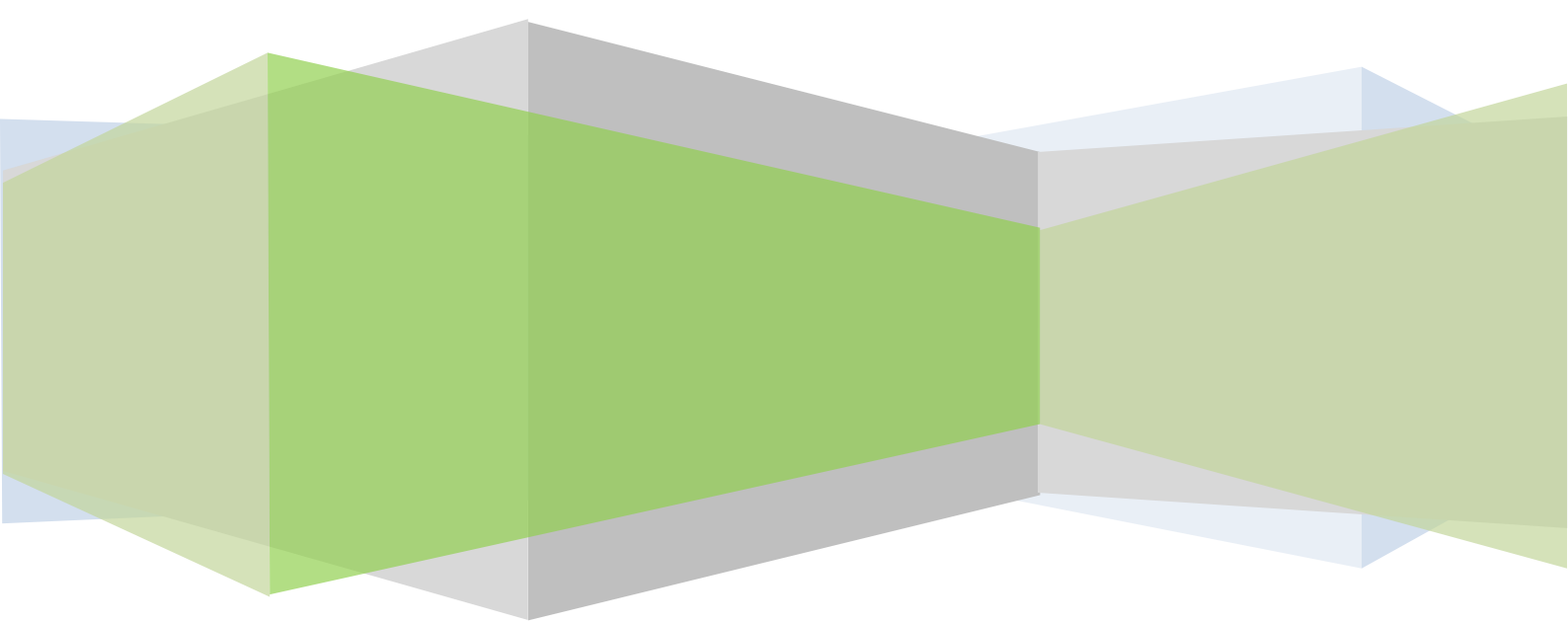


# Examinations Results Summary 2020

***No examinations sat due to COVID-19 – CAGs used as final grades and no national data analysis or performance tables***

## Contents

- Three year overview of summer results: GCSE and AS/A Level
- **GCSE 2020 Attainment and Progress:**
  - School headline figures
  - Subject headline figures & grade breakdown
  - Ethnic groups headline figures
  - Key groups headline figures
  - Progress 8 and Attainment 8 in English and maths
- **AS/A Level including ALPS 2020**
  - AS subject breakdown
  - A Level subject breakdown



## Swakeleys School for Girls: Three Year Overview of Results 2018 -2020

**2020 results: CAGs due to COVID-19 pandemic**

	GCSE Results		
	2018	2019	2020
% 9-4 in Eng & Ma (%9-5)	78% (55%)	83% (65%)	79% (60%)
% pupils with 5 grades 9-7	27%	30%	33%
% entered for Ebacc	63%	51%	60%
% achieving Ebacc (9-4)	45%	42%	40%
% achieving Ebacc of those entered	73%	82%	92%
<b>Ebacc Progress 8</b>	<b>+0.77</b>	<b>+0.66</b>	<b>+1.33</b>
<b>Other Progress 8</b>	<b>+1.24</b>	<b>+1.2</b>	<b>+1.33</b>
<b>Cohort Progress 8</b>	<b>+1.01</b>	<b>+0.91</b>	<b>+1.29</b>
<b>Cohort Attainment 8</b>	<b>55.07</b>	<b>57.87</b>	<b>56.72</b>

GCSE English Language/Literature (best of)			
	2018	2019	2020
%9-7	48%	45%	47%
%9-5	77%	88%	81%
%9-4	89%	93%	93%
<b>Progress 8</b>	<b>+1.33</b>	<b>+1.0</b>	<b>+1.51</b>
<b>Attainment 8</b>	<b>6.17</b>	<b>5.3</b>	<b>6.26</b>

GCSE Mathematics			
	2018	2019	2020
%9-7	27%	32%	27%
%9-5	59%	67%	63%
%9-4	79%	85%	81%
<b>Progress 8</b>	<b>+0.68</b>	<b>+0.64</b>	<b>+0.93</b>
<b>Attainment 8</b>	<b>4.10</b>	<b>4.40</b>	<b>5.19</b>

AS Level			
GRADES	2018	2019	2020
A%	17%	22%	32%
A-B%	37%	48%	56%
A-C%	60%	75%	80%
A-E%	94%	96%	99.7%
<b>ALPS T Score</b>	<b>3</b>	<b>3</b>	<b>2</b>

3 year T score **2**

A Level/Level 3			
GRADES	2018	2019	2020
A*	14%	7%	12%
A*-A%	29%	21%	40%
A*-B%	61%	47%	74%
A*-C%	88%	77%	96%
A*-E%	100%	99%	100%
<b>ALPS T Score</b>	<b>2</b>	<b>4</b>	<b>1</b>

3 year T score **3**

National Results - England			
	2018	2019	2020
<b>GCSE</b>			
9-5 inc E/M	43%	43%	n/a
9-4 inc E/M	64%	64%	n/a
<b>AS Level</b>			
A	28%	20%	27%
A-B	47%	37%	47%
A-C	65%	56%	69%
A-E	90%	86%	96%
<b>A Level</b>			
A*	8%	7%	14%
A*-A	26%	25%	36%
A*-B	53%	51%	62%
A*-C	77%	75%	85%
A*-E	98%	99%	99%

### Key points GCSE:

- Third year of majority new 9-1 specs
- Progress 8 score of +1.29
- Sustained % 9-5 EM match
- 33% with 5 or more grades 9-7
- Sustained and very strong Progress 8 for English and maths
- Sustaining Ebacc at double national percentage

### Key points AS and A Level:

- Improving all AS & A Level headlines
- A 2020 A Level ALPS score of 1.

# Summer 2020 GCSE Results Headlines: internally generated

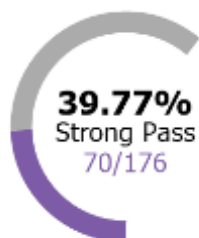
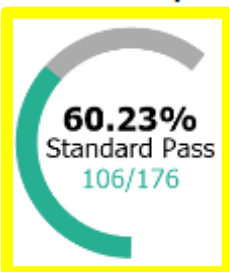
## Pupils

176 Pupils 0 Boys 176 Girls

## Baccalaureate

114

114 Pupils Entered - 64.77%



## Baccalaureate Subjects

	Eng	Ma	Sci	Hums	Lang
Entries	174	176	173	154	128
	99%	100%	98%	88%	73%
Standard	163	143	157	129	127
	93%	81%	89%	73%	72%
Strong	143	112	99	105	117
	81%	64%	56%	60%	66%

## Summary

5.22 1.07 1.48 1.55  
APS Sci VA Hums VA Lang VA

## English

Entries	9 to 7	9 to 5	9 to 4	
176	82	143	163	
<b>Pupils</b>	100.00%	46.59%	81.25%	92.61%
<b>Entries</b>	-	46.59%	81.25%	92.61%

## Maths

Entries	9 to 7	9 to 5	9 to 4	
176	47	112	143	
<b>Pupils</b>	100.00%	26.70%	63.64%	81.25%
<b>Entries</b>	-	26.70%	63.64%	81.25%

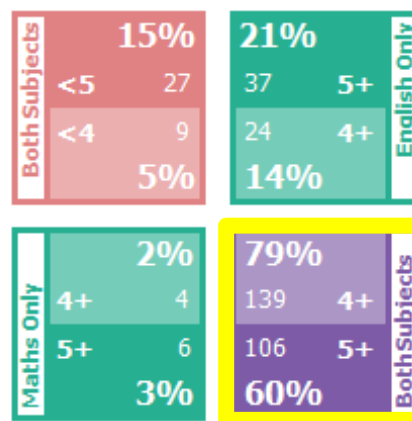
## Science

	Entries	Pupils	Entries
<b>1 Science</b>	175	99.43%	-
Grade 4+	157	89.20%	89.71%
<b>2 Sciences</b>	173	98.30%	-
Grade 4+	157	89.20%	90.75%
<b>3 Sciences</b>	0	0.00%	-
Grade 4+	0	0.00%	0.00%
<b>Bio/Chem/Phys</b>	0	0.00%	-
Grade 4+	0	0.00%	0.00%

## MFL

	Entries	Pupils	Entries
<b>1 MFL Entry</b>	128	72.73%	-
Grade 4+	127	72.16%	99.22%
<b>2 MFL Entries</b>	0	0.00%	-
Grade 4+	0	0.00%	0.00%

## English & Maths Threshold

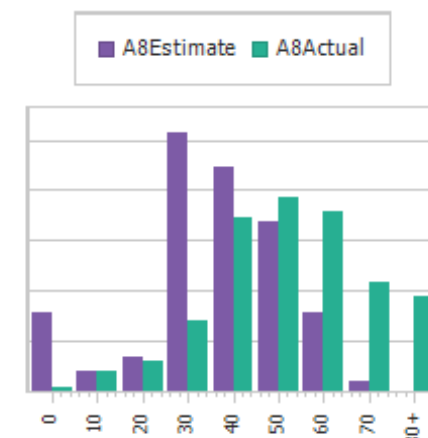


176 Pupils Entered - 100.00%

## Entries

<b>9 to 8 - inc A*'s</b>	(18.55%)
251	
<b>9 to 7 - inc A*-A</b>	(33.26%)
450	
<b>9 to 5 - inc A*-B</b>	(72.43%)
980	
<b>9 to 5 - inc A*-C</b>	(73.69%)
997	
<b>9 to 4 - inc A*-C</b>	(89.95%)
1217	
<b>Total</b>	<b>Average</b>
1353.00	7.69

## Progress 8



	A8	P8
English	12.52	+1.51
Maths	10.38	+0.93
EBacc	16.48	+1.33
Other	17.34	+1.33
<b>Overall</b>	<b>56.72</b>	<b>+1.29</b>

**Filled Slots** 163 92.61%

## Performance

	Pupils	Percent
<b>5 A* to C</b>	156	88.64%
Inc EnMa (4+):	137	77.84%
Inc EnMa (5+):	106	60.23%
<b>5 Grade 5+</b>	123	69.89%
Inc EnMa:	103	58.52%

### Key points:

The key headlines: Progress 8, Attainment 8, Ebacc and 9-5/9-4 EM match are boxed in yellow.

## GCSE subject v national and subject Progress 8 and Attainment 8 scores

Subject	Entered	School 9-7%	National 9-7%	School 9-5%	School 9-4%	National 9-4%	Progress 8	Attainment 8
Art 9-1	20	20	36	75	100	76	0.85	5.55
BTEC H & S	13	8	n/a	15	92	n/a	-0.16	3.73
Business 9-1	15	47	32	93	100	63	1.18	6.6
CACHE Child Care	19	26	n/a	63	100	n/a	1.64	5.74
Citizenship 9-1	16	56	28	100	100	81	2.19	7.0
Comp Science 9-1	14	29	40	93	100	84	1.23	6.0
Dance 9-1	9	67	38	89	100	88	2.23	6.78
Drama 9-1	9	44	43	100	100	91	2.04	6.67
DT	8	25	40	88	100	87	1.03	5.63
English 9-1	176	40	28	78	89	78	1.18	5.94
English Literature 9-1	174	39	31	76	92	85	1.16	5.96
Food 9-1	15	27	32	67	93	85	1.14	5.13
French 9-1	60	38	34	88	98	86	1.05	6.1
Further maths	15	87	n/a	100	100	n/a	1.94	7.8
Geography 9-1	97	31	34	72	86	78	1.11	5.63
German 9-1	68	25	38	94	100	90	1.11	5.84
History 9-1	57	39	33	61	81	77	1.27	5.49
Maths 9-1	176	27	18	64	81	67	0.92	5.18
Media 9-1	13	54	34	92	100	87	1.88	6.85
Photography 9-1	16	25	36	75	100	76	1.33	5.44
Psychology 9-1	22	59	30	86	100	81	1.26	6.68
RE 9-1	160	35	42	70	87	85	0.9	5.73
Science Trilogy 9-1	173	24	12	57	91	67	0.99	5.41
Science WELSH BOARD	2	0	n/a	0	0	n/a	n/a	n/a
Sociology 9-1	21	24	30	76	90	81	0.94	5.24

### Key points:

- 141 grades increased from our CAGs in the following subjects:

#### Grade increases:

68 science  
 20 English Lit  
 16 French  
 7 Maths  
 7 Business  
 6 German  
 5 Sociology  
 3 Art  
 3 Food  
 1 Psychology  
 1 HSC  
 1 Citizenship  
 1 English  
 1 Photography  
 1 RE

- Welsh board science was for two pupils to ensure they had a GCSE in science (non-attenders)

## Headline Results by Ethnicity and Key Groups

### 1) Overview by key group

Name	Pupil Count	KS2 Baseline	Attainment 8	Progress 8
+ a) Cohort	174	4.72	56.95	1.29
+ b) HAP	58	5.25	71.4	1.42
+ c) MAP	102	4.58	51.21	1.21
+ d) LAP	14	3.23	38.98	1.27
+ e) Disadvantaged	58	4.67	55.05	1.21
+ f) Other	121	4.75	57.74	1.34
+ g) EAL	84	4.69	59.63	1.63
+ h) White English	53	4.76	53.45	0.88
+ i) SEND	22	4.05	41	0.86

#### **Key points:**

- Significantly positive progress for all prior attainment bands (HML)
- No significant difference between pupil premium and cohort progress

### Overview by ethnicity

Name	Pupil Count	KS2 Baseline	Attainment 8	Progress 8
+ White - English	52	4.76	53.44	0.88
+ Sri Lankan Tamil	17	4.93	63.41	1.43
+ Other Pakistani	12	4.4	62.35	1.71
+ Afghan	10	4.19	61.33	2.45
+ Black Caribbean	7	4.76	57.21	1.24
+ Bangladeshi	5	4.72	58.9	1.46
+ White and Black African	4	4.38	51.06	1.38
+ Iraqi	4	4.55	65.5	2.62
+ White and Black Caribbean	3	5.27	74.83	1.7
+ Chinese and Any Other Ethnic Group	2	0	24.5	0
+ Kurdish	2	4.4	56	1.83
+ White - Scottish	1	4.8	54	0.98

#### **Key point:**

- White British are most significant ethnic group and have a positive progress score

## Progress 8 and Attainment 8: English & Maths

### 1) Whole cohort: Headlines

	<b>English</b> <small>(best of Lit and English)</small>	<b>Maths</b>
<b>Progress 8</b>	<b>+1.51</b>	<b>+0.93</b>
<b>Attainment 8</b>	6.26	5.19

### 2) a) Key Groups break down: English and English Literature

Key group	HAP	MAP	LAP	Disadvantaged	Other	SEND	Disadvantaged HAP	EAL	White English
<b>No. in group</b>	<b>58</b>	<b>102</b>	<b>14</b>	<b>58</b>	<b>121</b>	<b>22</b>	<b>17</b>	<b>84</b>	<b>53</b>
<b>English Progress 8</b>	+1.36	+1.08	+1.00	+1.13	+1.22	+0.80	+1.47	+1.46	+0.84
<b>English Attainment 8</b>	7.34	5.43	4.07	5.84	6.02	4.50	7.47	6.14	5.68
<b>English Lit Progress 8</b>	+1.45	+0.93	+1.59	+1.12	+1.20	+1.16	+1.64	+1.48	+0.74
<b>English Lit Attainment 8</b>	7.41	5.35	4.64	5.79	6.06	4.86	7.65	6.24	5.58

### b) Key Groups break down: Maths

Key group	HAP	MAP	LAP	Disadvantaged	Other	SEND	Disadvantaged HAP	EAL	White English
<b>No. in group</b>	<b>58</b>	<b>102</b>	<b>14</b>	<b>58</b>	<b>121</b>	<b>22</b>	<b>17</b>	<b>84</b>	<b>53</b>
<b>Progress 8</b>	+1.07	+0.84	+0.63	+0.86	+0.94	+0.06	+1.06	+1.36	+0.34
<b>Attainment 8</b>	6.76	4.60	2.86	4.97	5.27	2.985	6.82	5.63	4.62

#### **Key points:**

- The Progress 8 scores for English and maths are all overall **significantly positive**

## AS Subject Profiles: Grades and ALPS

Subject	Exams	A	B	C	D	E	U	A>E	A>C	A>B	Avg PA
AS - Art (Photography)	6	1	1	3	1	0	0	100.0%	83.3%	33.3%	5.68
AS - Biology	39	12	9	5	5	7	1	97.4%	66.7%	53.8%	6.94
AS - Business Studies	16	3	3	5	5	0	0	100.0%	68.8%	37.5%	5.68
AS - Chemistry	36	8	7	4	11	6	0	100.0%	52.8%	41.7%	7.00
AS - Drama & Theatre Studies	10	3	3	4	0	0	0	100.0%	100.0%	60.0%	5.58
AS - Economics	9	2	2	3	2	0	0	100.0%	77.8%	44.4%	6.75
AS - English Lang. & Lit.	14	3	6	5	0	0	0	100.0%	100.0%	64.3%	6.35
AS - English Literature	24	10	8	5	1	0	0	100.0%	95.8%	75.0%	6.65
AS - French	10	5	2	3	0	0	0	100.0%	100.0%	70.0%	7.35
AS - Geography	3	1	2	0	0	0	0	100.0%	100.0%	100.0%	6.05
AS - German	7	2	3	1	1	0	0	100.0%	85.7%	71.4%	7.46
AS - Government & Politics	17	4	2	5	5	1	0	100.0%	64.7%	35.3%	5.71
AS - History	15	4	6	3	2	0	0	100.0%	86.7%	66.7%	6.44
AS - Mathematics	33	20	3	5	4	1	0	100.0%	84.8%	69.7%	7.07
AS - Maths (Further)	3	3	0	0	0	0	0	100.0%	100.0%	100.0%	7.56
AS - Media Studies	15	3	4	6	2	0	0	100.0%	86.7%	46.7%	4.93
AS - Physics	5	3	1	0	0	1	0	100.0%	80.0%	80.0%	7.61
AS - Psychology	40	11	11	10	6	2	0	100.0%	80.0%	55.0%	6.26
AS - Religious Studies	30	11	8	11	0	0	0	100.0%	100.0%	63.3%	6.13
AS - Sociology	42	10	10	11	7	4	0	100.0%	73.8%	47.6%	5.48
Totals	374	119	91	89	52	22	1	99.7%	79.9%	56.1%	6.37

Subject	2019/20		
	Entries	Score	Grade
AS - Arabic	-	-	-
AS - Art (Craft)	-	-	-
AS - Art (Photography)	6	1.09	6
AS - Biology	39	0.89	3
AS - Business Studies	16	1.07	3
AS - Chemistry	36	0.83	4
AS - Dance	-	-	-
AS - Drama & Theatre Studies	10	1.23	3
AS - Economics	9	0.94	4
AS - English Lang. & Lit.	14	1.10	3
AS - English Literature	24	1.10	2
AS - French	10	1.01	3
AS - General Studies	-	-	-
AS - Geography	3	1.23	1
AS - German	7	0.91	5
AS - Government & Politics	17	1.06	3
AS - History	15	1.07	3
AS - Mathematics	33	1.04	2
AS - Maths (Further)	3	1.15	2
AS - Media Studies	15	1.25	3
AS - Physics	5	0.92	3
AS - Psychology	40	1.06	3
AS - Punjabi	-	-	-
AS - Religious Studies	30	1.16	3
AS - Sociology	42	1.12	3
AS - Urdu	-	-	-

## A Level Subject Profiles: Grades and ALPS

Subject	Exams	A*	A	B	C	D	E	A*>E	A*>C	A*>B	Avg PA
A - Art (Craft)	2	0	1	0	1	0	0	100.0%	100.0%	50.0%	6.92
A - Art (Photography)	9	1	1	3	3	1	0	100.0%	88.9%	55.6%	5.18
A - Biology	17	2	6	6	2	1	0	100.0%	94.1%	82.4%	7.41
A - Business Studies	17	2	5	5	5	0	0	100.0%	100.0%	70.6%	6.33
A - Chemistry	18	1	6	4	6	1	0	100.0%	94.4%	61.1%	7.23
A - Economics	9	2	3	2	2	0	0	100.0%	100.0%	77.8%	7.05
A - English Lang. & Lit.	28	3	8	12	5	0	0	100.0%	100.0%	82.1%	5.86
A - English Literature	24	3	6	11	4	0	0	100.0%	100.0%	83.3%	6.07
A - Geography	6	1	2	2	1	0	0	100.0%	100.0%	83.3%	7.16
A - Government & Politics	7	1	3	1	1	1	0	100.0%	85.7%	71.4%	6.07
A - History	15	2	3	5	5	0	0	100.0%	100.0%	66.7%	6.41
A - History of Art	1	0	0	0	1	0	0	100.0%	100.0%	0.0%	7.30
A - Mathematics	22	5	8	6	2	0	1	100.0%	95.5%	86.4%	7.37
A - Maths (Further)	7	1	2	2	2	0	0	100.0%	100.0%	71.4%	7.05
A - Media Studies	14	0	4	6	3	1	0	100.0%	92.9%	71.4%	5.10
A - Physics	4	0	1	3	0	0	0	100.0%	100.0%	100.0%	6.42
A - Psychology	37	5	8	11	11	2	0	100.0%	94.6%	64.9%	6.43
A - Religious Studies	5	1	1	2	1	0	0	100.0%	100.0%	80.0%	5.45
A - Sociology	39	3	12	14	8	2	0	100.0%	94.9%	74.4%	5.50
A - Spanish	1	1	0	0	0	0	0	100.0%	100.0%	100.0%	7.38
Totals	282	34	80	95	63	9	1	100.0%	96.5%	74.1%	6.32

Subject	2019/20		
	Entries	Score	Grade
A - Arabic	-	-	-
A - Art (Craft)	2	0.93	8
A - Art (Fine Art)	-	-	-
A - Art (Photography)	9	1.13	4
A - Biology	17	0.96	2
A - Business Studies	17	1.08	3
A - Chemistry	18	0.93	3
A - Dance	-	-	-
A - D&T (Product Design)	-	-	-
A - Drama & Theatre Studies	-	-	-
A - Economics	9	1.05	3
A - English Lang. & Lit.	28	1.16	2
A - English Literature	24	1.14	2
A - Film Studies	-	-	-
A - French	-	-	-
A - Geography	6	1.00	4
A - German	-	-	-
A - Government & Politics	7	1.14	2
A - History	15	1.06	2
A - History of Art	1	0.70	8
A - Law	-	-	-
A - Mathematics	22	1.01	3
A - Maths (Further)	7	1.00	4
A - Media Studies	14	1.18	2
A - Physics	4	1.06	2
A - Portuguese	-	-	-
A - Psychology	37	1.04	3
A - Punjabi	-	-	-
A - Religious Studies	5	1.23	1
A - Sociology	39	1.17	2
A - Spanish	1	1.30	2
A - Urdu	-	-	-
EPQ - Extended Project	6	1.13	3